

LED FLOOD / AREA LIGHT

MEGA Floods

480W 720W 960W**480W 61,260 lm****720W 91,630 lm****960W 122,680 lm**~130 LUMENS
PER WATT50,000+
HOURSIP67
RATINGMULTIPLE
LENS OPTIONSRA >80 CRI
5000KMOUNTING
OPTIONS5 YEAR
WARRANTY

HIGH-PERFORMANCE COMPONENTS IN MODULAR DESIGN

High output floods - 61,000 to 122,000 lm
Open modular design for optimum heat management and lower wind resistance
Rated IP67 and IK10. Polycarbonate lenses.

BUILT TO YOUR SPECIFICATION

14 optical lenses, 4 CCT options, housing colours, 3 bracket options, 2 voltages 277VAC & 415VAC, Dimmable 1-10VDC and DALI.

APPLICATIONS

- Indoor & outdoor flood and area lighting
- Heavy industry, mining, transport, railyards, perimeters, carparks, stadiums and other sporting venues.
- Mounted on walls, ceilings and poles
- Remote drivers for hard to access areas, or high heat or vibration areas
- 415VAC option for 3-phase installs.

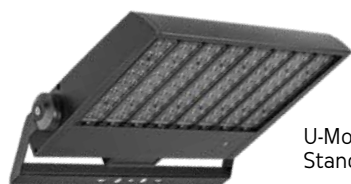
MEGA480

480W
61,260 lm
1000W+ HID equiv



8 x 60W modules
1050mA current
277 or 415VAC
Weight (U bracket) 14.0kg
Dimensions: 475x628x85mm

MOUNTING BACKET OPTIONS



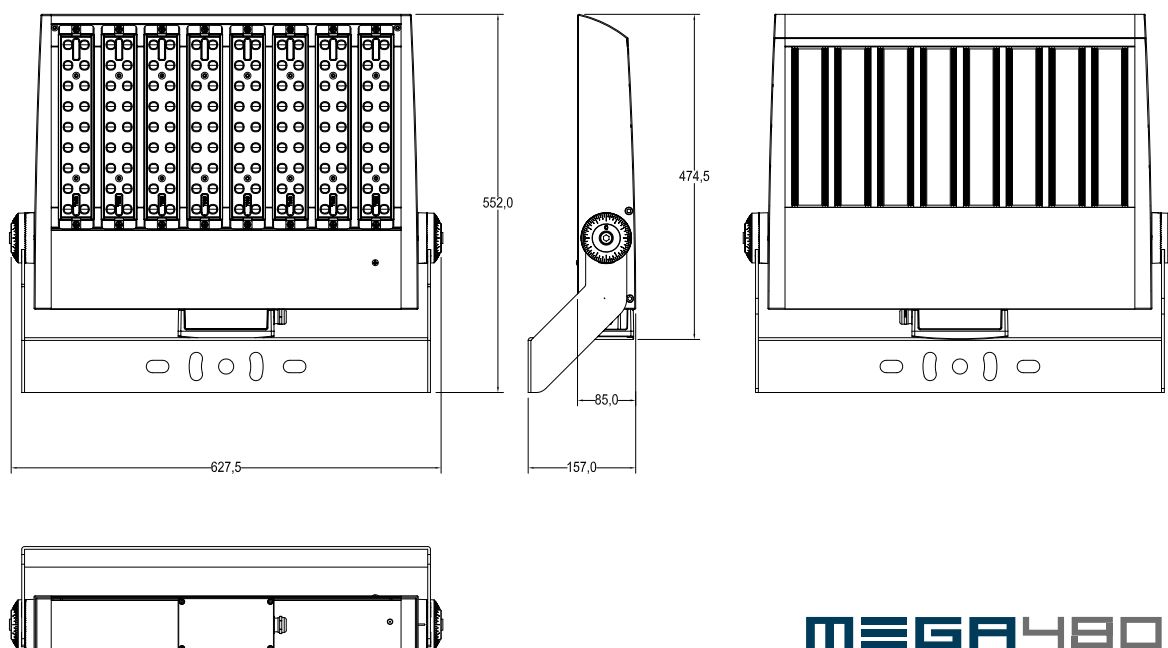
U-Mounting
Standard wall/pole



L-Mounting
Adjustable angle



T-Mounting
Fixed angle



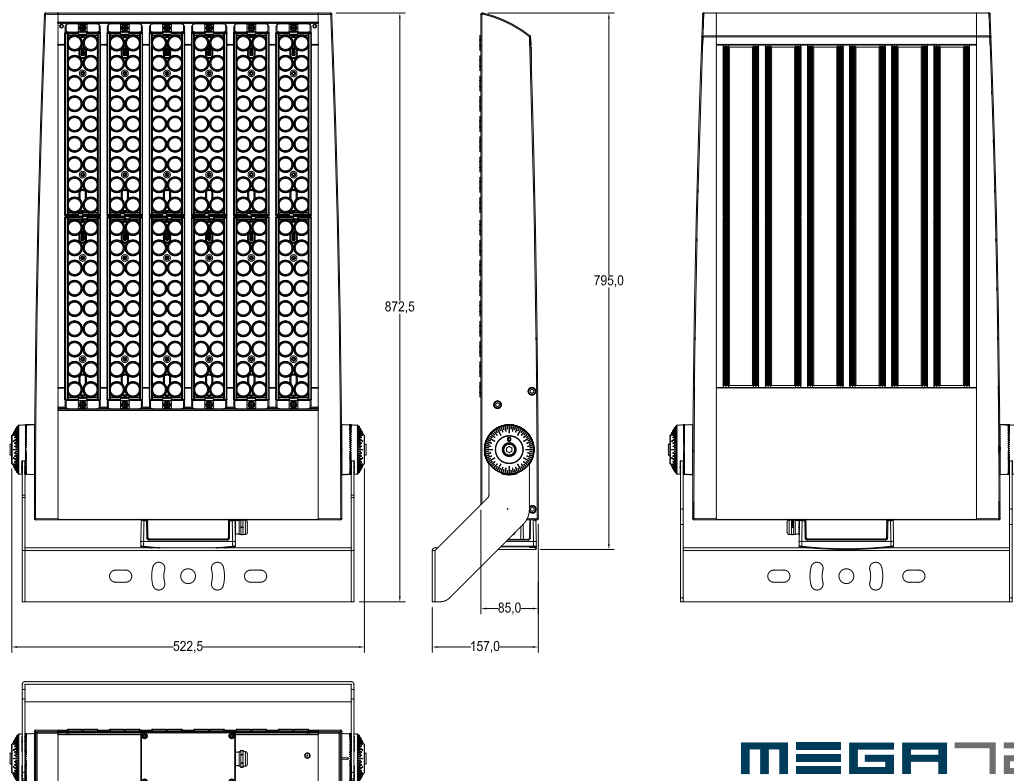
MEGA480

MEGA720

720W
91,630 lm
2000W HID equiv

6x2x60W modules
1050mA current
277 or 415VAC
Weight (U bracket) 17.8kg
Dimensions: 795x523x85mm

MOUNTING BACKET OPTIONS



MEGA720

MEGA960

960W
122,680 lm
2000W+ HID equiv

8x2x60W modules
1050mA current
277 or 415VAC
Weight (U bracket) 23.3kg
Dimensions: 795x648x85mm

MOUNTING BACKET OPTIONS



U-Mounting
Standard wall/pole

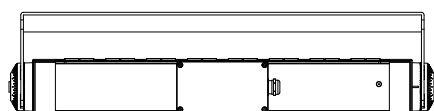
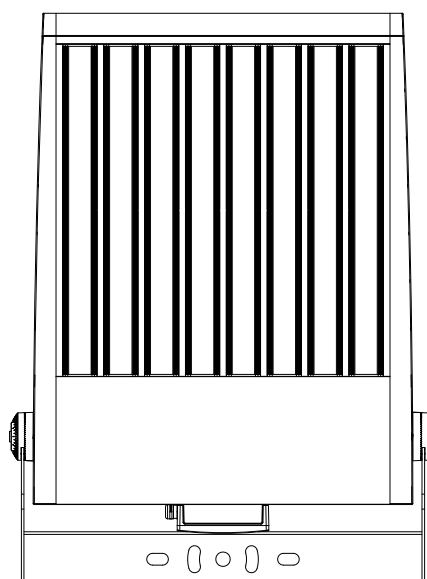
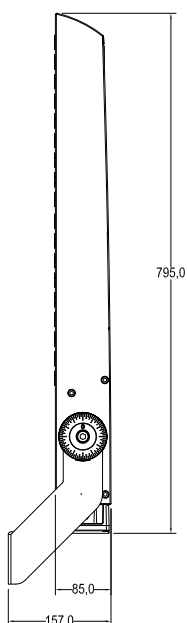
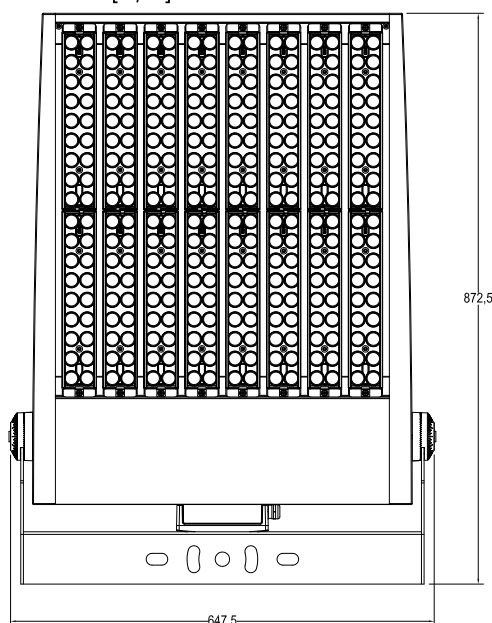


L-Mounting
Adjustable angle



T-Mounting
Fixed angle

Model: MEGA960/795x648x85



MEGA960

DELIVERY OF MADE-TO-ORDER ITEMS

Please allow up to 6-8 weeks for special order items and where sufficient components may not be available locally.

480W 61,260 lm
1000W+ HID equivalent



720W 91,630 lm
2000W HID equivalent



960W 122,680 lm
2000W+ HID equivalent



MEGA480

MEGA720

MEGA960

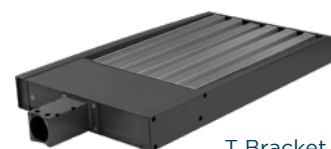
BRACKET OPTIONS



U Bracket
walls and poles



L Bracket
adjustable pole mount

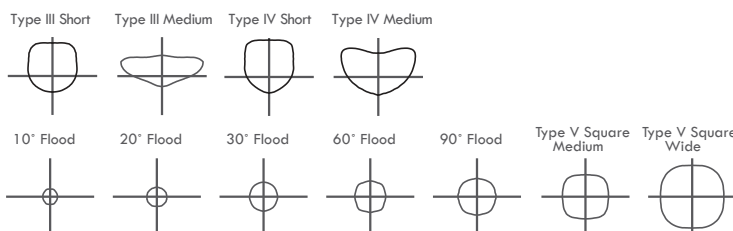


T Bracket
fixed pole mount

OPTICAL LENS OPTIONS

Asymmetric:
T3S, T3M, T4S, T4M.

Symmetric:
Square: T5M (standard), T5W
Round: T10D, T20D, T30D, T60D, T90D
NB Standard lens is T5M square medium.



EPA*

*Measured in square feet - with U bracket

	0°Tilt	10°Tilt	20°Tilt	30°Tilt	45°Tilt	60°Tilt	70°Tilt	80°Tilt	90°Tilt
480W	0.72	0.99	1.26	1.52	1.79	2.06	2.33	2.59	2.86
720W	0.90	1.28	1.65	2.03	2.40	2.78	3.15	3.53	3.90
960W	0.96	1.46	1.96	2.46	2.97	3.47	3.97	4.47	4.97

TECHNICAL PARAMETERS

Power consumption	480W 720W 960W
Input voltage options	100-277VAC or 415VAC
Input current	1050mA
Power factor	≥0.9 at full load
Surge protection	Imax 20kA
LED chips	High performance -130+ lm/W
Driver / Dimming	Inventronics / Dimmable 1-10VDC; DALI
Efficacy	-130lm/W
Colour temperature	5000°K (options for Amber, 4000°K, 6000°K)
CRI	RA >70
Light distribution	IESNA Types III, IV, V options
Light spill control	Built-in optical spill control

IP Rating / IK Rating	IP67 / IK10
Composition - lenses	Polycarbonate - no glass
Composition - housing	Aluminium with polyester coating (>100 microns)
Working temperature	-40 to 50 °C
Service life	>50,000 hours
Warranty	5 years
Weight / Dimensions	See pages 2-4 for dimensions of fittings & drivers
Product codes	277VAC 415VAC
480W	FLD480L-XXX FLD480H-XXX
720W	FLD720L-XXX FLD720H-XXX
960W	FLD960L-XXX FLD960H-XXX
Bracket type - add suffix:	U/standard. L/hinged pole mount. T/fixed pole mount